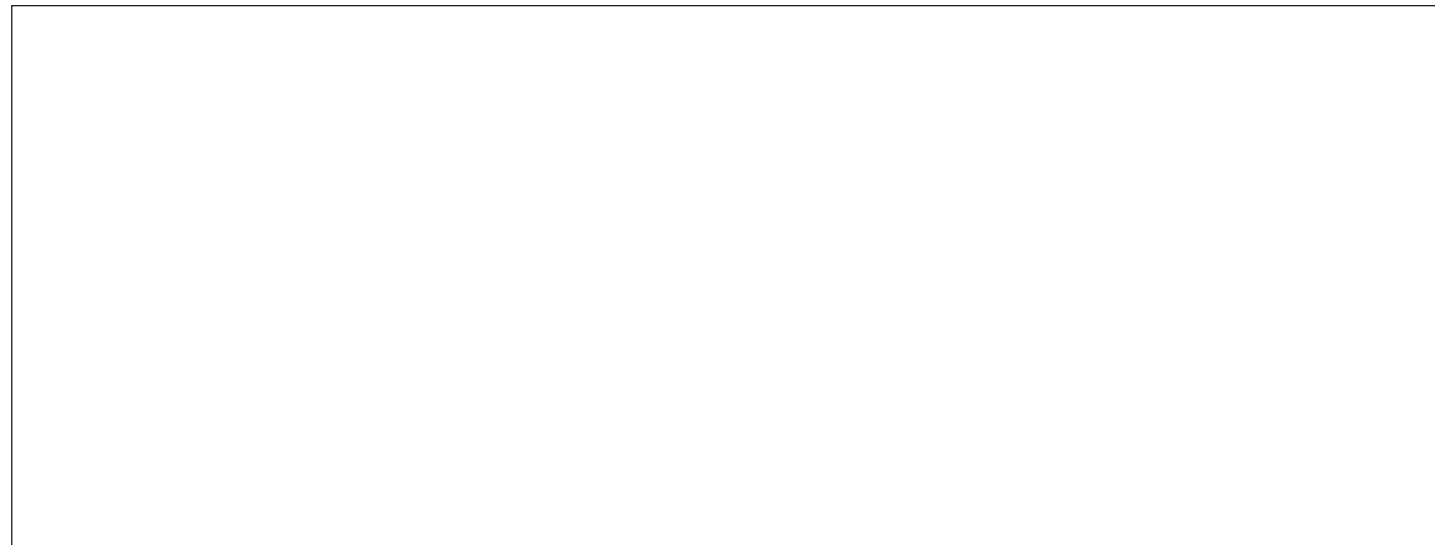


Celebrate Autumn's Splendor with Tim Packer's *Tangled Forest*



TANGLED FOREST © Tim Packer
Giclée Canvas \$1,295 50 s/n plus 10 Artist's Proofs* 36" x 48" (TANG0003)
Giclée Canvas \$895 50 s/n plus 10 Artist's Proofs* 30" x 40" (TANG0001)



All prices are stated in U.S. dollars.

© 2008 The Mill Pond Press Companies, 250 Center Court – Unit A, Venice, FL 34285-5548

Phone: 941-497-6020 or 800-535-0331 Fax: 941-492-6983 www.millpond.com

Distributed in Canada by Nature's Scene, 91 Armstrong Ave., Georgetown, Ontario L7G 4S1 Phone: 800-387-6645 www.naturescene.com
Distributed in the United Kingdom by the John Southern Gallery, Dobwalls Nr. Liskeard, Cornwall PL 146 HB www.thesoutherngallery.co.uk/

Mill Pond reserves the right to reproduce any image in this publication, in any format, in the future • All rights reserved • Use, distribution, reproduction or modification of this publication or the images contained herein or combination of any portion of either with anything else for any purpose or to produce any product is a violation of the copyright herein and will be prosecuted to the full legal extent • Stated sizes are image sizes; print dimensions are larger • Suggested retail prices, edition sizes, and framing are subject to change without notice • Mill Pond's ability to fulfill all requests for limited editions is restricted • † Signifies that an open edition has also been published
*When available, Artist's Proofs (APs) are offered at a 20% premium over the s/n price. Canvases larger than 32" x 45" will be shipped unstretched, in tubes.

Please share this brochure with a friend when you are finished with it.

AFC
Fall 2008
United States
and
Canada

Printed in U.S.A.

ART FOR COLLECTORS

Vol. III, 2008



THE **MILL POND PRESS**TM
C O M P A N I E S

Detail from *Frosty Morning – Blue Jay* by Robert Bateman (See page 3.)

© Robert Bateman 1992

ClasArt® – An Amazing New Way to Enjoy Beautiful Art

Mill Pond Press is always searching for new and better ways to reproduce fine art for you to own and enjoy. That's why we are so excited to announce the debut of ClasArt®, representing a revolution in the world of fine art reproductions. ClasArt® is a lightweight, acid-free and extremely durable and resilient art form. A rigid material that will not chip, fade, scratch or smear, ClasArt® can be framed without glass. Best of all, ClasArt® is the perfect marriage of the giclée printing method with a hard archival surface. The result is an exquisite reproduction, true to the original work of art, that will always retain its luster and vivid color and is virtually indestructible.

Giclée prints are, by their very nature, a specialized art form, prized for their vibrant color, clarity and vivid details, and ClasArt® giclées look just like original paintings. Many artists, like Robert Bateman, paint their originals on archival board, and until this latest Mill Pond Press breakthrough, no other means has come as close to duplicating their original paintings as ClasArt® with such lasting results. Because of their white surface, the colors really pop when the giclée ink is applied.

If you love the thrill of seeing an original painting by your favorite artist at a museum or gallery, just imagine how you'll feel seeing ClasArt® in your home or office where you can enjoy it each and every day. There is only one place to see just how exquisite this new art form is – call your authorized Mill Pond Press gallery today to reserve your very own ClasArt® prints. (Prepare to be awed!)



WINTER SONG – CHICKADEES © Robert Bateman
 ClasArt® \$695 350 s/n plus 70 Artist's Proofs*
 13-1/8" x 10" (WINT0117)
 (A 950 s/n offset paper edition has previously been published. Publisher Sold Out.)

Familiar, friendly and energetic, chickadees are cheerful and good-natured, no matter what the weather.

"In this picture I have tried to keep in tune with their mood by showing the bright red highbush cranberries and the white pine needles bursting through clumps of snow."

– Robert Bateman

The bold and the beautiful is an apt description for the blue jay. No stranger to drama, blue jays are flashy and vocal, adding color and excitement to the frosty silence.

"I have placed this bird in a young white pine. Sometimes moisture laden, warm air moves north into the wintry landscape. At night, the temperature may drop to below freezing, leaving a frosty coating on most of the objects in the landscape. Morning reveals the world as a temporary fairyland. One or two hours of full sun melts and evaporates the frozen covering, and the world is back to normal."

— Robert Bateman



FROSTY MORNING – BLUE JAY © Robert Bateman
 ClasArt® \$895 350 s/n plus 70 Artist's Proofs*
 20" x 15-7/8" (FROS0004)
 (A 950 s/n offset paper edition has previously been published. Publisher Sold Out.)



UP A TREE – LION CUB © Robert Bateman
 ClasArt® \$595 350 s/n plus 70 Artist's Proofs*
 8" x 10" (UPAT0003)
 (A 950 s/n offset paper edition has previously been published. Publisher Sold Out.)

Like all babies, most young animals play until they simply run out of steam, as was the case with this adorable lion cub.

"This particular cub climbed the tree out of youthful exuberance. Then, not knowing what else to do, he promptly fell asleep."

— Robert Bateman

Faraway Eyes that Mesmerize by Patricia Pepin



With his dreamy gaze fixed on a far distant point, this snow leopard is as mysterious as the distant land that is his ancestral home.

"The light was perfect on this snow leopard. Cast against the shadowed background, every hair was visible and sparkling in the warm September sunlight. Far away from the mountains that his grandparents were probably the last of his lineage to see, he still looks like he belongs to the remote Himalayans. There, his peers are a living legend that haunts the glistening peaks and changes forever those who have climbed their steep and dangerous paths."

– Patricia Pepin

FARAWAY EYES © Patricia Pepin
Giclée Canvas \$295 180 s/n plus 40 Artist's Proofs*
12" x 8" (FARA0004)



COZY LEDGE – COYOTE
© Patricia Pepin
Giclée Canvas \$495 180 s/n
plus 40 Artist's Proofs* 12" x 19"
(COZY0003)

Matthew Hillier Presents the Majesty of the Rockies



MAJESTY © Matthew Hillier
Giclée Canvas \$695 180 s/n plus 40 Artist's Proofs* 36" x 24" (MAJE0002)

"For me, there is nothing that conjures up the drama and majesty of the Rockies more than a lone bull elk, bugling from a mountain side. That eerie mountain music that echoes throughout the landscape is so haunting."

"I saw this elk in the Tetons at the height of the breeding season. He was a magnificent old bruiser of an animal. The painting is also an homage to Sir Edwin Landseer whose masterpiece, Monarch of the Glen, showing a red deer in a Scottish mountain landscape, is one of my all-time favorite paintings."

– Matthew Hillier

Don't Miss Robert Bateman's Newest Renaissance Editions!



The Renaissance Editions are elegant, state-of-the-art reproductions that faithfully reflect all of the rich detail and subtle nuances found in the artist's original paintings.

"Of all of the American mammals, the world of the mountain goat is the most rarified and precipitous, and yet he negotiates it with the nonchalant ease of a stroll in the park. The goats' bland expression is compatible with their confidence....In addition to creating the texture of the rock, I was very absorbed by portraying the textures of their fur."

– Robert Bateman

SHEER DROP – MOUNTAIN GOATS © Robert Bateman
Giclée Canvas Museum Edition \$1,695 99 s/n plus 33 Artist's Proofs*
48" x 36" (SHEE0003)
Giclée Canvas Renaissance Edition \$1,195 350 s/n plus 70 Artist's Proofs*
40" x 30" (SHEE0001)
(A 950 s/n offset paper edition has previously been published. Publisher Sold Out.)

River Ford - Tiger – A Masterful New Release by Robert Bateman



RIVER FORD – TIGER © Robert Bateman
Giclée Canvas \$995 195 s/n plus 40 Artist's Proofs* 24" x 48" (RIVE0023)

As he glides through the water, the tiger's reflected stripes seem to dissolve into an abstract pattern carried on the current.



"The barn is a wonderful part of man's architectural heritage. Through many centuries, it has evolved almost as a living, breathing thing."

– Robert Bateman

SHELTER © Robert Bateman
Giclée Canvas Renaissance Edition \$895 225 s/n plus 45 Artist's Proofs* 18" x 32"
(SHEL0004)
(A 950 s/n offset paper edition has previously been published. Publisher Sold Out.)

Trace Carl Brenders' Delightful *Family Tree*



THE FAMILY TREE © Carl Brenders
 Giclée Canvas Renaissance Edition \$895 195 s/n plus 40 Artist's Proofs*
 37" x 23" (FAMI0007)
 (A 3,500 s/n offset paper edition has previously been published. Publisher Sold Out.)

This remarkable Renaissance Edition faithfully reflects the luminous detail and trademark texture found in Brenders' unparalleled art.

Tiny (about 7" high) and endearing, the saw-whet owl often appears tame upon discovery, as its defense is to sit still rather than take flight.

"Once, on a field trip in Alaska, I met a veterinarian who cared for sick and injured birds. After they recovered, he released them again. This is how I got the opportunity to pet a young saw-whet owl. Owl lovers say that once you fall in love with saw-whets, it is forever."

– Carl Brenders

A Word to the Wise: Brenders' *Wisdom and Innocence* is Incredible



With age comes wisdom, and in the world of nature, survival depends on lessons learned early and well.

"I had a wonderful opportunity to study two red-tailed hawk chicks. They were still chicks but already had a lot of brown feathers and showed the real raptor character. At that age they have never yet killed any prey. They will stay in the nest for several months as innocent little creatures, being fed by mother and father."

"After the study work I did with the two chicks, it was really tempting to do a close-up scene with the mother and her offspring in the nest. It was interesting to show the expression of wisdom of the mother hawk and the innocent but ambitious expression of the chicks. But the real challenge for me was getting the texture of the feathers."

– Carl Brenders

WISDOM AND INNOCENCE © Carl Brenders
 Giclée Canvas \$595 195 s/n plus 30 Artist's Proofs* 26" x 18" (WISD0003)
 Offset Paper \$125 650 s/n plus 76 Artist's Proofs* 20-3/4" x 14-3/8" (WISD0001)

Brent Townsend's *Winter Boundaries* Enchants



WINTER BOUNDARIES © Brent Townsend
Giclée Canvas \$695 180 s/n plus 40 Artist's Proofs* 16" x 48" (WINT0115)

Winter has a magic all its own. In its pale sunlight, long shadows extend over a landscape once hidden.

"Winter Boundaries depicts a scene that is typical of the rolling hills that are near my studio – farmland dotted with wood lots and fence rows.

"I especially like draft horses and have done several paintings of them over the years. In this painting, I wanted to emphasize the shimmer of the horses' coats in the late afternoon sun. I positioned them in a snow covered field so that they would stand out against the shadows, cast by the rolling clouds passing over the landscape."

– Brent Townsend



AFTERGLOW © Brent Townsend
Giclée Canvas \$995 180 s/n plus 40 Artist's Proofs* 18" x 40" (AFTE0014)

Get Caught Up in Dominik Modlinski's *Rush Hour*



RUSH HOUR © Dominik J. Modlinski
Giclée Canvas \$895 180 s/n plus 40 Artist's Proofs* 32" x 32" (RUSH0001)

Here's one traffic tie-up that will put a smile on your face! Dominik Modlinski perfectly captures the colorful, comical chaos as a group of penguins hurries along like five o'clock commuters heading home from an office high-rise. In this case, the skyscrapers are snow covered mountain peaks illuminated by the setting sun.

"This painting was inspired by my journey to the shore of a large colony of penguins on the Antarctic Peninsula in 2007. The penguins represented in this painting are gentoo penguins, distinctive for their colorful orange bills and the white spot on their heads. I especially wanted to portray the individual characteristics of each of the different penguins. I observed that when they emerge from the water, they all head out together in one direction before splitting up in pairs or going their individual ways.

"As I paint, I often put my wooden paintbrush handles in the ground with the bristles upward. But I soon learned that it was necessary to put the brushes with paint on them back in my case. Unlike animals in other parts of the world, penguins have no sense of fear of humans, only curiosity. One of the things that I found especially touching was how they would come within one foot to observe me and nibble on my paintbrush bristles as I worked."

– Dominik Modlinski

Jane Jones' *Grande Amaryllis* is an Elegant Study in Contrasts



GRANDE AMARYLLIS © Jane Jones
Giclée Canvas \$650 180 s/n plus 40 Artist's Proofs*
35" x 20" (GRAN0012)

Jane Jones loves to grow the flowers that she paints. Watching them bloom adds to her fascination. She raised these favorites with the delicate red edge from bulbs, purely for the joy of painting and sharing them with you!

"Amaryllis bulbs are rather rough and unattractive, and it's hard to believe that such a perfect and stunning beauty could be waiting inside. That idea fascinates me, and reminds me of the relationship between body and soul."

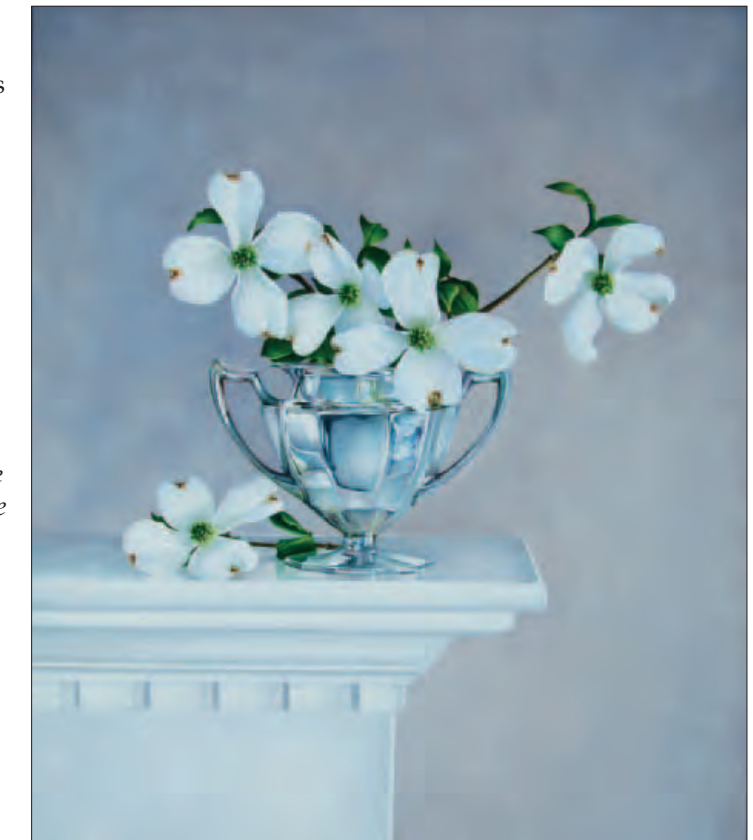
– Jane Jones

Mill Pond Press Welcomes Arleta Pech Home!

We are so pleased to welcome long-time art lovers' favorite, Arleta Pech, back to Mill Pond Press! Arleta tells us that she's happy to be "home after all her travels," and we are glad that she is. Her two new pieces are simply stunning, in every season.

"When I'm traveling it's so wonderful to work with flowers that are native to an area. I only paint flowers I can see or touch so that I can truly capture them. A still life setting is only there to enhance the flowers. In this case, I realized that the home's mantel was a perfect setting for the dogwood. But capturing just the right light meant moving furniture out of the way, throwing open the drapes, and digging through cabinets of antiques. I became obsessed with sketching and arranging the dogwood (much to the homeowner's amusement as she watched the creative process take hold of the artist)."

– Arleta Pech



SPRINGTIME MEMORIES © Arleta Pech
Giclée Canvas \$595 180 s/n plus 40 Artist's Proofs*
27" x 23" (SPRI0039)



WINTER BERRIES © Arleta Pech
Giclée Canvas \$450 180 s/n plus 40 Artist's Proofs* 15" x 31" (WINT0113)

"The white linen reminded me of snow, so this painting took shape on a frosty day as the light reflected another world into the silver goblet."

– Arleta Pech

Introducing the Captivating Canines of Gretta Gibney



IN THE RUFF - GUILTY © Gretta Gibney
Giclée Canvas \$795 180 s/n plus 40 Artist's Proofs*
30" x 30" (INTH0059)

"I believe that dogs are complicated creatures that, like humans, have many different and varied aspects of their personalities. I am using one dog to portray different forms of expression which I think are universal to all dogs."

– Gretta Gibney



IN THE RUFF - WISTFUL © Gretta Gibney
Giclée Canvas \$795 180 s/n plus 40 Artist's Proofs*
30" x 30" (INTH0061)

Sueellen Ross is Back and She's Brought Some Friends!

We are excited to announce that Sueellen Ross has returned! Sueellen says she is "thrilled and delighted to be back home" at Mill Pond, and we are just as happy to have her (and her four-legged friends).

"This tabby has a faraway look in his eyes. He could be daydreaming, fixating on a bird, thinking about his next meal, or plotting mayhem against the neighbor's cat. We'll never know. To the human observer, he's Just Looking."

– Sueellen Ross

"I've deleted any visual clues from the background, to echo the enigma of the cat's state of mind. It could be sunup, sundown, a world of dreams — it could be anytime or anywhere."



JUST LOOKING © Sueellen Ross
Giclée Canvas \$295 180 s/n plus 40 Artist's Proofs*
11" x 11" (JUST0012)



TAILGATE PARTY © Sueellen Ross
Giclée Canvas \$295 180 s/n plus 40 Artist's Proofs*
10" x 15" (TAIL0001)

"My friends (who breed golden retrievers) took all their dogs on a late afternoon outing. Everybody was pretty excited, though the older dogs have learned to curb their enthusiasm — at least on the outside."

"Each dog is at a different stage in life — from the oldest (second from the left) struggling to keep up, to the youngest (second from the right), barely able to contain himself. The challenge in this painting was to show each dog's individuality — its age, personality and state of mind — with just its face showing out of the back of the truck."

– Sueellen Ross